



**Year 6**

**End of Key Stage 2 Tests**

**Tuesday 9th May –  
Friday 12th May 2023**

**Helping you to help your child!**



# What will I find out?

---

- **Timetable for the tests**
- **English Grammar, Punctuation and Spelling Test**
- **Reading Test**
- **Mathematics Tests**
- **How the tests will be marked and judged**
- **Any questions**



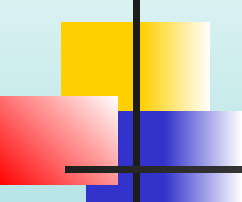
# The tests .....

---

In a few weeks time, our Year 6 children will take their SATs papers. These tests in English and Maths will reflect the National Curriculum and are intended to be rigorous. The marking scheme focuses on scaled scores, which we will explain shortly.

The tests will be both set and marked externally - the results will be used to measure the school's performance. Your child's marks will be used in conjunction with teacher assessment to give a broader picture of their attainment.

# Timetable for the tests



All KS2 SATs will be held in the week beginning 8th May 2023.

Date	
<b>Tuesday 9th May 2023</b>	English Grammar, punctuation and spelling
<b>Wednesday 10th May 2023</b>	English Reading Comprehension
<b>Thursday 11th May 2023</b>	Mathematics Paper 1: Arithmetic Mathematics Paper 2: Reasoning
<b>Friday 12th May 2023</b>	Mathematics Paper 3: Reasoning



# KS2 ENGLISH



- Grammar and Punctuation test  
45 minutes
- Spelling test  
Approximately 20 minutes
- Reading test  
60 minutes (including reading time)



# Reading Test



The reading test will be a single paper with questions based on three passages of text. Your child will have one hour (including reading time) to complete the test.

There will be a selection of question types, including:



**Fact retrieval questions** ask you to pick out information from the text.



**Inference questions** are all about doing a bit of detective work, to find out what's going on.



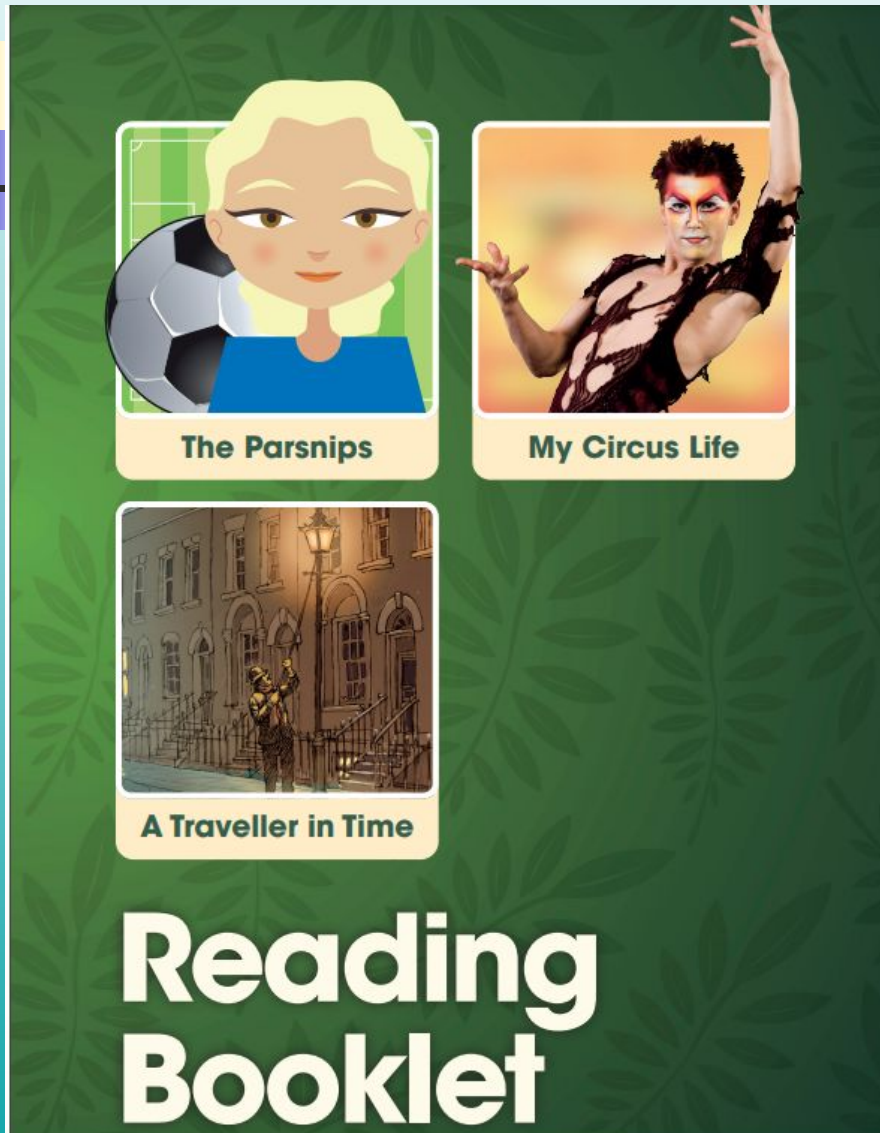
**Word Meaning questions** are about working out exactly what words mean when they're used in the text.



**Summary questions** get you to work out the overall meaning of a chunk of text.



# Example KS2 Reading Text



You have a copy  
on the table –  
please have a  
look.

# Example KS2 Reading questions

Questions 1 – 11 are about *The Parsnips* (pages 4–6)

1 Veronika's football team has two names.

What are the **two** names?

1. \_\_\_\_\_

2. \_\_\_\_\_

1 mark

2 What effect did the knock on the door have on Veronika and her family?

\_\_\_\_\_

1 mark

3 (a) Who knocked on the door?

\_\_\_\_\_

1 mark



# Example KS2 Reading questions



33

Think about the whole text.

What impressions do you get of Penelope as she describes her unusual experience?

Give **two** impressions, using evidence from the text to support your answer.

1. \_\_\_\_\_

\_\_\_\_\_

\_\_\_\_\_

2. \_\_\_\_\_

\_\_\_\_\_

\_\_\_\_\_

3 marks

# How to support your child with reading



- Read with your child and get your child to read aloud to you. Then, ask them questions about the text to check their understanding.
- Read aloud to your child whilst your child follows the text: listening is an important part of reading; it will help your child learn the importance of punctuation and reading with expression.



# Example KS2 Grammar questions

Draw a line to match each **prefix** to the correct word so that it makes a new word.

**Prefix**

re

de

mis

im

ll

**Word**

mature

understood

legible

frost

do



# Example KS2 Grammar questions

Which sentence has been punctuated correctly?

Tick one.

Immediately after, dinner we did the washing up.

☐

Immediately after dinner we did, the washing up.

☐

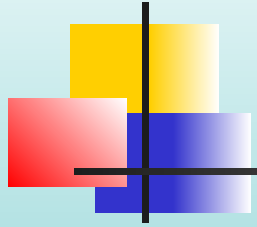
Immediately after dinner, we did the washing up.

☐

Immediately, after dinner we did the washing up.

☐

# How to support your child with SPAG



- Encourage your child to spend time on Lexia or Rollama.
- When reading to and/or with your child, discuss the use of inverted commas to mark speech, the use of parenthesis (brackets, dashes and commas) to add additional information; the use of semi-colons/colons etc - remember our SPAG Bible.
- Unfortunately, the grammar paper relies on a child knowing the terminology e.g. subordinate clause, main clause, adjective, article, passive/active voice - and many more.

We use these in daily teaching practice, so the children will be ok.



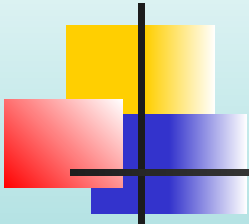
# The Mathematics Tests

---

- Paper 1 (30 mins) Arithmetic
- Paper 2 (40 mins) Reasoning
- Paper 3 (40 mins) Reasoning

Reasoning means  
'Word Problems'.

# Example KS2 Arithmetic questions



$$\boxed{\phantom{0000}} = 936 + 285$$

$$89,994 + 7,643 =$$

$$3.005 + 6.12 =$$

$$125.48 - 72.3 =$$

$$122,456 - 11,999 =$$

$$879 \times 3 =$$

$$0.9 \div 10 =$$

			7	1	
			4	6	
			<hr/>		

$$15 \times 6.1 =$$

2	9			

$$\frac{3}{5} \div 3 =$$

$$1\frac{4}{5} + \frac{3}{10} =$$

$$3^2 + 10 =$$

$$\frac{4}{7} + \frac{5}{7} =$$

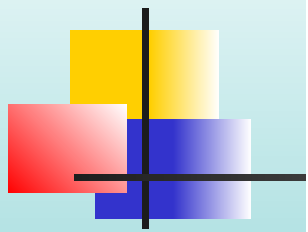
$$20\% \text{ of } 1,800 =$$

$$15\% \times 440 =$$

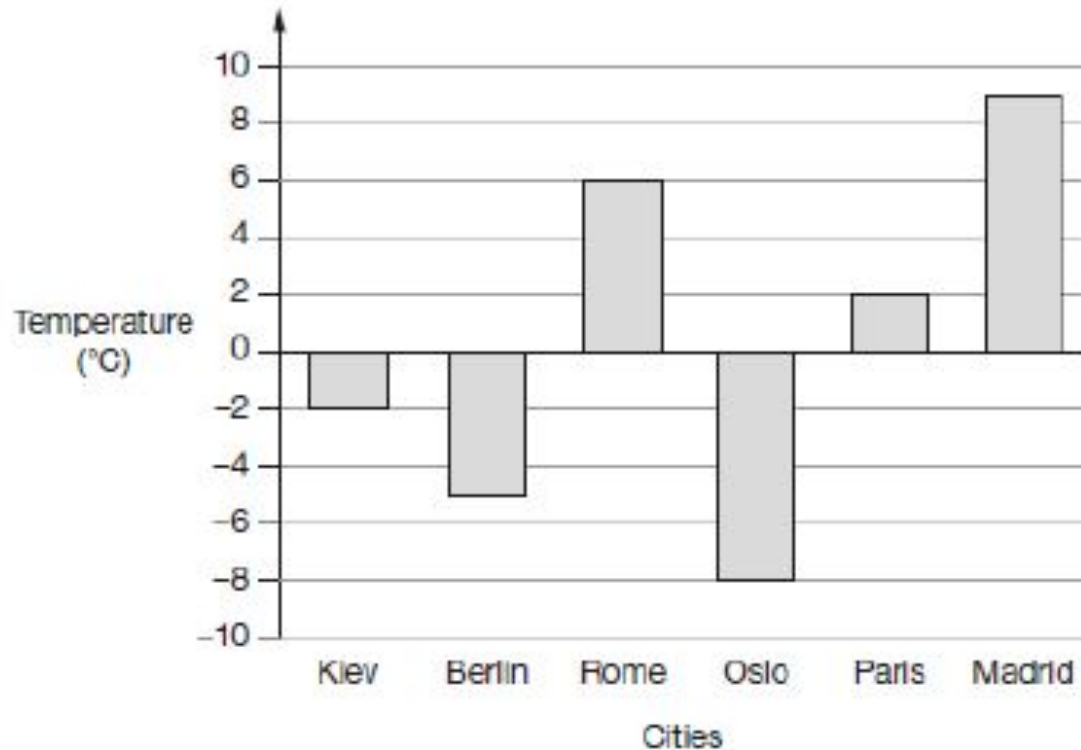
$$60 - 42 \div 6 =$$



# Example KS2 Reasoning questions



This graph shows the temperature in six cities on one day in January.



Which city was 4 degrees **warmer** than Kiev?

# Example KS2 Reasoning questions

6

Emma has a 5 litre bag of compost.



She uses 2.75 litres.

How much compost does Emma have left?

litres

1 mark

# Example KS2 Reasoning questions

18

This sign shows the number of **empty spaces** on each level of a car park at 10 am.

<b>P</b>	Empty Spaces
<b>Level 2</b>	511
<b>Level 1</b>	268

In this car park, **each** level has 800 spaces.

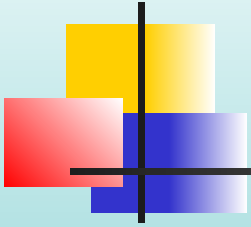
What is the total number of cars **parked** in the car park at 10 am?

Show  
your  
method

A large rectangular grid for showing the method, consisting of 20 columns and 10 rows. A small rectangular box is located in the bottom right corner of the grid, spanning 4 columns and 2 rows.

2 marks

# How to support your child with maths.

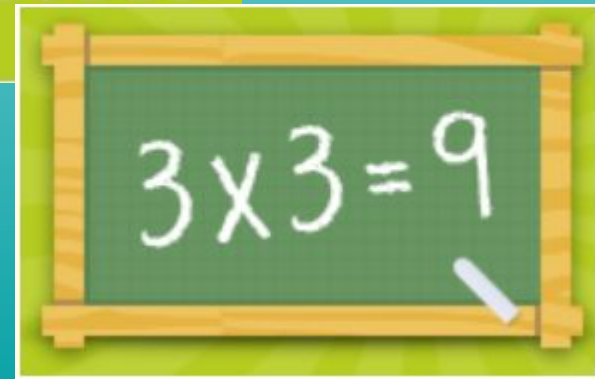


- Knowing their timetables - they can use them accurately and quickly for multiplication and division - TTRS & [timestables.co.uk](http://timestables.co.uk)



**Timestables.co.uk**  
Learn the times tables here!

- Reasoning practice - HWK





# Marking and Levels

---

- Mathematics, Reading and SPAG tests are marked **externally**.
- For Writing, on going writing assessments will be used to inform an overall teacher assessment levelled judgement, of a child's work across Year 6.
- Results come back to school in **July**.
- Results are shared with secondary schools.
- Results will be provided as a **scaled score** . Children's raw marks will be converted into a scaled score to identify whether they have met the **national standard**.
- The test results will be included in the children's annual report – both the scaled score and whether the child has met the national standard for English and Maths will be reported.



# Raw Scores and Scaled Scores

---

## Maths:

- The test is out of 110 marks.
- Last year, the Year 6 Expected Standard level was a score of 58.
- 58** raw marks = **100** scaled score
- 96** raw marks = **110** scaled score

## Reading:

- The test is out of 50 marks.
- Last year, the Year 6 Expected Standard level score of 29.
- 29** raw marks = **100** scaled score
- 41** raw marks = **110** scaled score

## SPAG:

- The test is out of 70 marks.
- Last year, the Year 6 Expected Standard level score of 38.
- 38** raw marks = **100** scaled score
- 55** raw marks = **110** scaled score

**100 = At age related expectation**

**110 = Above age related expectation**



# Between now and then...

---

The children are preparing thoroughly for these tests. We are extremely proud of how hard they have worked and how committed they have been to do their best. Between now and then, it will be important to:

- Get plenty of early nights.
- Eat well and get lots of fresh air.
- Stay calm - don't panic.
- Be confident and believe in themselves.

NB: There will be no HWK the weekend before SATs.



# During SATs Week

---

Each morning, Tuesday to Friday, we have –

## **Breakfast - 8:20am**



Bacon baps, sausage baps or croissant/pain au chocolate and juice

## **Wake & Shake - 8:40am**

Exercise to music - children wear PE kit all week.





# Any questions?

---

